

## **Quadra St between Lily Ave and Nicholson St**

**October 21, 2019 To October 25, 2019**



The data presented here is for information purposes only and should not be considered authoritative for construction, geotechnical, engineering, navigational, legal, or other site-specific uses. The information shared is owned by the Transportation Division of the Engineering Department at the District of Saanich. Accuracy is not guaranteed.

Start Date: 21-Oct-19  
 Start Time: 0:00  
 Station ID: M0027-01

**Location 1: Quadra St between Lily Ave and Nicholson St**

Note:

DATE:	October 21, 2019		October 22, 2019		October 23, 2019		October 24, 2019		October 25, 2019		WK AVG		WK AVG	HOURLY
	MON		TUE		WED		THURS		FRI				CH 1+2	%
Time:	NB	SB	NB	SB	NB	SB	NB	SB	NB	SB	NB	SB		
12-1 AM			35	33	30	41	39	40			35	38	73	0.4%
1-2 AM			14	9	25	18	19	10			19	12	32	0.2%
2-3 AM			16	8	15	6	17	15			16	10	26	0.1%
3-4 AM			22	10	16	7	14	11			17	9	27	0.1%
4-5 AM			35	26	25	28	33	24			31	26	57	0.3%
5-6 AM			113	76	124	72	111	66			116	71	187	0.9%
6-7 AM			231	187	226	230	236	207			231	208	439	2.2%
7-8 AM			526	619	520	667	505	635			517	640	1157	5.8%
8-9 AM			709	853	729	898	760	877			733	876	1609	8.0%
9-10 AM			549	705	577	695	542	654			556	685	1241	6.2%
10-11 AM			555	612	587	596	602	660			581	623	1204	6.0%
11-12 PM			579	538	652	691	639	620			623	616	1240	6.2%
12-1 PM			625	689	663	636	589	670			626	665	1291	6.4%
1-2 PM			649	633	662	624	632	630			648	629	1277	6.4%
2-3 PM			730	717	677	672	688	672			698	687	1385	6.9%
3-4 PM			849	808	819	788	864	831			844	809	1653	8.3%
4-5 PM			982	817	924	876	977	881			961	858	1819	9.1%
5-6 PM			869	732	811	763	838	768			839	754	1594	8.0%
6-7 PM			612	600	607	577	592	542			604	573	1177	5.9%
7-8 PM			393	382	456	389	464	416			438	396	833	4.2%
8-9 PM			346	299	328	290	364	331			346	307	653	3.3%
9-10 PM			283	248	329	243	320	259			311	250	561	2.8%
10-11 PM			171	121	184	118	181	132			179	124	302	1.5%
11-12 AM			93	64	89	78	98	111			93	84	178	0.9%
<b>LANES</b>			<b>9986</b>	<b>9786</b>	<b>10075</b>	<b>10003</b>	<b>10124</b>	<b>10062</b>			<b>10062</b>	<b>9950</b>	<b>20012</b>	<b>100.0%</b>
<b>TOTAL</b>			<b>19772</b>		<b>20078</b>		<b>20186</b>				<b>20020</b>			
	MON		TUE		WED		THURS		FRI		WK AVG			

PEAK HOUR					TOTAL VEHICALS-PEAK PERIODS		2 HOUR PEAK INTERVALS						
MAX. 7 - 9 am PEAK HOUR	1609	⇒	8.0%	between	8-9 AM	8709	⇒	6 HR TOTAL	<b>2 HR AM (7 - 9 AM)</b>				
MAX. 7 - 11 am PEAK HOUR	1609	⇒	8.0%	between	8-9 AM	6179	⇒	4 HR TOTAL	VEH / HR	VEH / 2HR	2 HR %		
									7-8 AM	1157	2766	13.8%	
									8-9 AM	1609			
MAX. 11 am - 1 pm PEAK HOUR	1291	⇒	6.4%	between	12-1 PM	<b>24 HOUR FACTORS</b>		<b>2 HR NOON (11 - 1 PM)</b>					
MAX. 11 am - 3 pm PEAK HOUR	1385	⇒	6.9%	between	2-3 PM			VEH / HR	VEH / 2HR	2 HR %			
								11-12 PM	1240	2530	12.6%		
MAX. 4 - 6 pm PEAK HOUR	1819	⇒	9.1%	between	4-5 PM	2.30	⇒	6-24 HR FACT.	<b>2 HR PM (4 - 6 PM)</b>				
MAX. 3 - 6 pm PEAK HOUR	1819	⇒	9.1%	between	4-5 PM	3.24	⇒	4-24 HR FACT.	VEH / HR	VEH / 2HR	2 HR %		
									4-5 PM	1819	3413	17.1%	
									5-6 PM	1594			

# Quadra St between Lily Ave and Nicholson St

Northbound

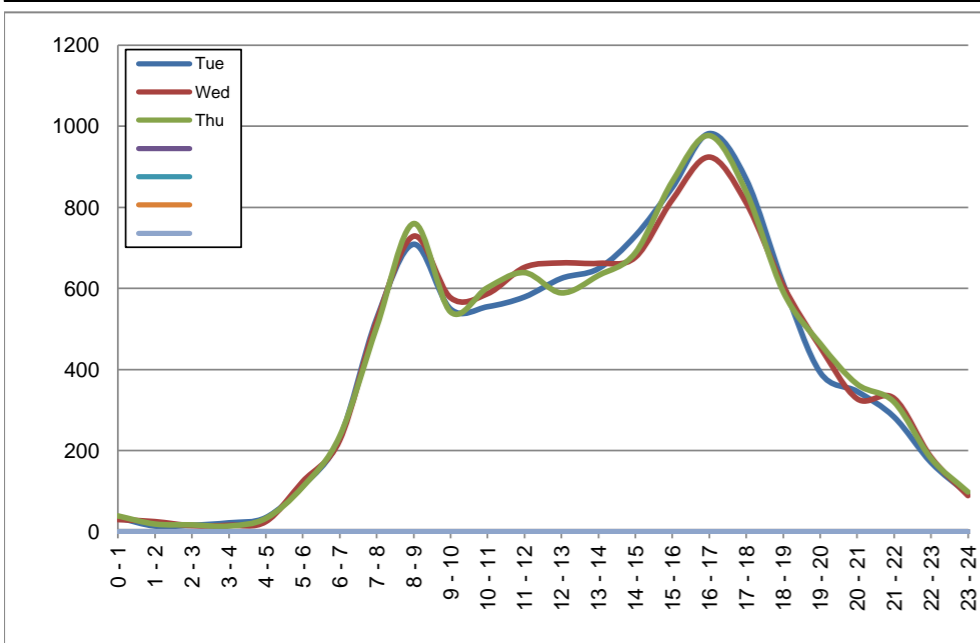
October 22, 2019 to October 24, 2019

## Hourly Volumes

Time Period	Tue	Wed	Thu				
	Oct 22	Oct 23	Oct 24				
0 - 1	35	30	39				
1 - 2	14	25	19				
2 - 3	16	15	17				
3 - 4	22	16	14				
4 - 5	35	25	33				
5 - 6	113	124	111				
6 - 7	231	226	236				
7 - 8	526	520	505				
8 - 9	709	729	760				
9 - 10	549	577	542				
10 - 11	555	587	602				
11 - 12	579	652	639				
12 - 13	625	663	589				
13 - 14	649	662	632				
14 - 15	730	677	688				
15 - 16	849	819	864				
16 - 17	982	924	977				
17 - 18	869	811	838				
18 - 19	612	607	592				
19 - 20	393	456	464				
20 - 21	346	328	364				
21 - 22	283	329	320				
22 - 23	171	184	181				
23 - 24	93	89	98				
<b>Day Total</b>	<b>9986</b>	<b>10075</b>	<b>10124</b>				

## 15-Minute Volumes

Time Start	Tue	Wed	Thu				
	Oct 22	Oct 23	Oct 24				
0:00	13	13	14				
0:15	12	5	11				
0:30	4	7	5				
0:45	6	5	9				
1:00	6	7	13				
1:15	3	8	3				
1:30	3	7	3				
1:45	2	3	0				
2:00	5	4	6				
2:15	4	3	5				
2:30	2	4	3				
2:45	5	4	3				
3:00	7	2	3				
3:15	3	6	1				
3:30	5	3	8				
3:45	7	5	2				
4:00	11	5	9				
4:15	7	4	8				
4:30	9	8	9				
4:45	8	8	7				
5:00	18	19	14				
5:15	22	18	29				
5:30	39	49	40				
5:45	34	38	28				
6:00	39	46	53				
6:15	48	47	47				
6:30	73	55	52				
6:45	71	78	84				
7:00	88	77	76				
7:15	128	119	101				
7:30	137	149	137				
7:45	173	175	191				
8:00	179	198	192				
8:15	209	189	203				
8:30	163	160	195				
8:45	158	182	170				
9:00	143	128	135				
9:15	119	149	135				
9:30	147	147	140				
9:45	140	153	132				
10:00	140	125	122				
10:15	157	138	170				
10:30	119	174	165				
10:45	139	150	145				
11:00	128	132	151				
11:15	133	162	162				
11:30	164	189	162				
11:45	154	169	164				
12:00	162	164	148				
12:15	167	151	160				
12:30	135	162	139				
12:45	161	186	142				
13:00	142	162	141				
13:15	141	166	190				
13:30	192	173	137				
13:45	174	161	164				
14:00	182	159	170				
14:15	189	159	149				
14:30	193	188	179				
14:45	166	171	190				
15:00	227	175	197				
15:15	184	208	210				
15:30	206	206	226				
15:45	232	230	231				
16:00	258	241	246				
16:15	231	233	240				
16:30	247	232	239				
16:45	246	218	252				
17:00	227	242	216				
17:15	237	214	237				
17:30	210	176	193				
17:45	195	179	192				
18:00	170	166	166				
18:15	170	168	141				
18:30	134	146	149				
18:45	138	127	136				
19:00	112	130	127				
19:15	85	125	115				
19:30	104	116	104				
19:45	92	85	118				
20:00	87	77	94				
20:15	100	102	108				
20:30	63	81	80				
20:45	96	68	82				
21:00	89	94	76				
21:15	85	92	88				
21:30	52	82	90				
21:45	57	61	66				
22:00	45	52	61				
22:15	49	56	34				
22:30	45	34	50				
22:45	32	42	36				
23:00	24	37	36				
23:15	24	28	27				
23:30	27	9	18				
23:45	18	15	17				



Site notes:

# Quadra St between Lily Ave and Nicholson St

Southbound

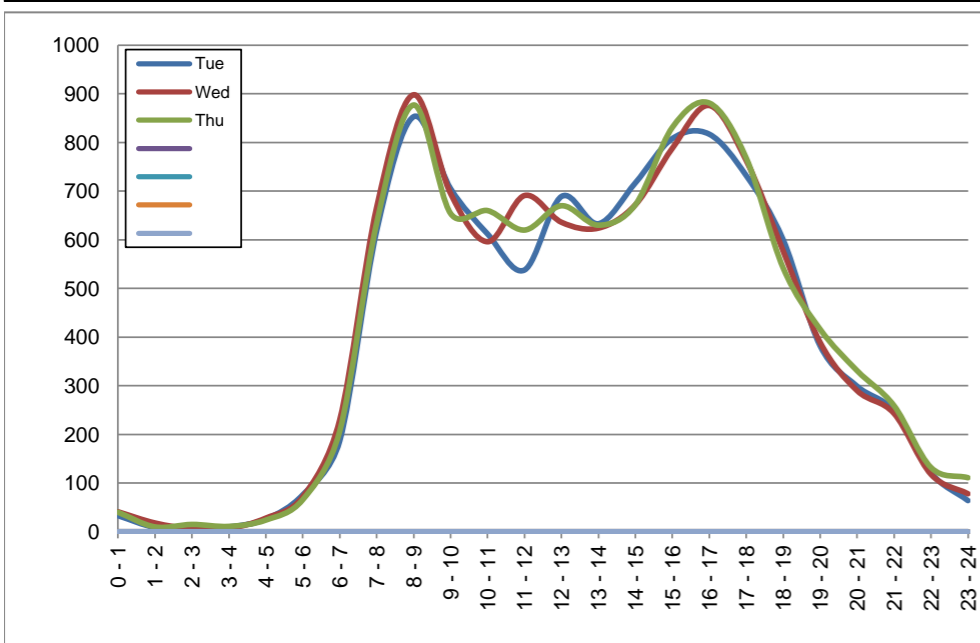
October 22, 2019 to October 24, 2019

## Hourly Volumes

Time Period	Tue	Wed	Thu			
	Oct 22	Oct 23	Oct 24			
0 - 1	33	41	40			
1 - 2	9	18	10			
2 - 3	8	6	15			
3 - 4	10	7	11			
4 - 5	26	28	24			
5 - 6	76	72	66			
6 - 7	187	230	207			
7 - 8	619	667	635			
8 - 9	853	898	877			
9 - 10	705	695	654			
10 - 11	612	596	660			
11 - 12	538	691	620			
12 - 13	689	636	670			
13 - 14	633	624	630			
14 - 15	717	672	672			
15 - 16	808	788	831			
16 - 17	817	876	881			
17 - 18	732	763	768			
18 - 19	600	577	542			
19 - 20	382	389	416			
20 - 21	299	290	331			
21 - 22	248	243	259			
22 - 23	121	118	132			
23 - 24	64	78	111			
<b>Day Total</b>	<b>9786</b>	<b>10003</b>	<b>10062</b>			

## 15-Minute Volumes

Time Start	Tue	Wed	Thu			
	Oct 22	Oct 23	Oct 24			
0:00	10	11	15			
0:15	9	16	11			
0:30	3	7	6			
0:45	11	7	8			
1:00	4	6	3			
1:15	2	2	2			
1:30	2	7	2			
1:45	1	3	3			
2:00	1	1	5			
2:15	2	1	3			
2:30	2	3	3			
2:45	3	1	4			
3:00	1	2	1			
3:15	1	1	3			
3:30	4	2	5			
3:45	4	2	2			
4:00	4	4	1			
4:15	4	5	5			
4:30	8	10	5			
4:45	10	9	13			
5:00	8	10	5			
5:15	17	16	13			
5:30	19	23	17			
5:45	32	23	31			
6:00	28	34	19			
6:15	37	46	38			
6:30	64	79	69			
6:45	58	71	81			
7:00	90	106	81			
7:15	151	145	145			
7:30	168	188	179			
7:45	210	228	230			
8:00	221	252	222			
8:15	201	218	206			
8:30	202	219	224			
8:45	229	209	225			
9:00	197	216	177			
9:15	170	152	163			
9:30	161	168	153			
9:45	177	159	161			
10:00	173	129	150			
10:15	129	141	179			
10:30	145	137	139			
10:45	165	189	192			
11:00	147	174	140			
11:15	147	173	165			
11:30	106	149	152			
11:45	138	195	163			
12:00	171	190	185			
12:15	160	158	158			
12:30	175	146	172			
12:45	183	142	155			
13:00	171	166	151			
13:15	145	148	180			
13:30	171	158	156			
13:45	146	152	143			
14:00	146	157	163			
14:15	187	179	168			
14:30	186	159	172			
14:45	198	177	169			
15:00	201	188	199			
15:15	199	197	205			
15:30	180	185	199			
15:45	228	218	228			
16:00	200	199	206			
16:15	207	224	216			
16:30	188	237	210			
16:45	222	216	249			
17:00	206	202	224			
17:15	180	218	183			
17:30	187	186	189			
17:45	159	157	172			
18:00	163	153	156			
18:15	144	157	139			
18:30	155	133	127			
18:45	138	134	120			
19:00	144	119	110			
19:15	83	110	117			
19:30	72	82	95			
19:45	83	78	94			
20:00	98	68	104			
20:15	73	72	74			
20:30	63	83	78			
20:45	65	67	75			
21:00	74	74	83			
21:15	84	72	69			
21:30	50	50	63			
21:45	40	47	44			
22:00	50	29	30			
22:15	28	35	41			
22:30	24	22	37			
22:45	19	32	24			
23:00	19	31	45			
23:15	21	20	25			
23:30	16	19	25			
23:45	8	8	16			



Site notes:

# Vehicle Speed Summary

Saanich Engineering Department

Count Id: [M0027-01](#)

Filename: [Quadra St between Lily Ave and Nicholson St-Oct-2019.xlsm](#)

**Location:** Quadra St between Lily Ave and Nicholson St

Note:

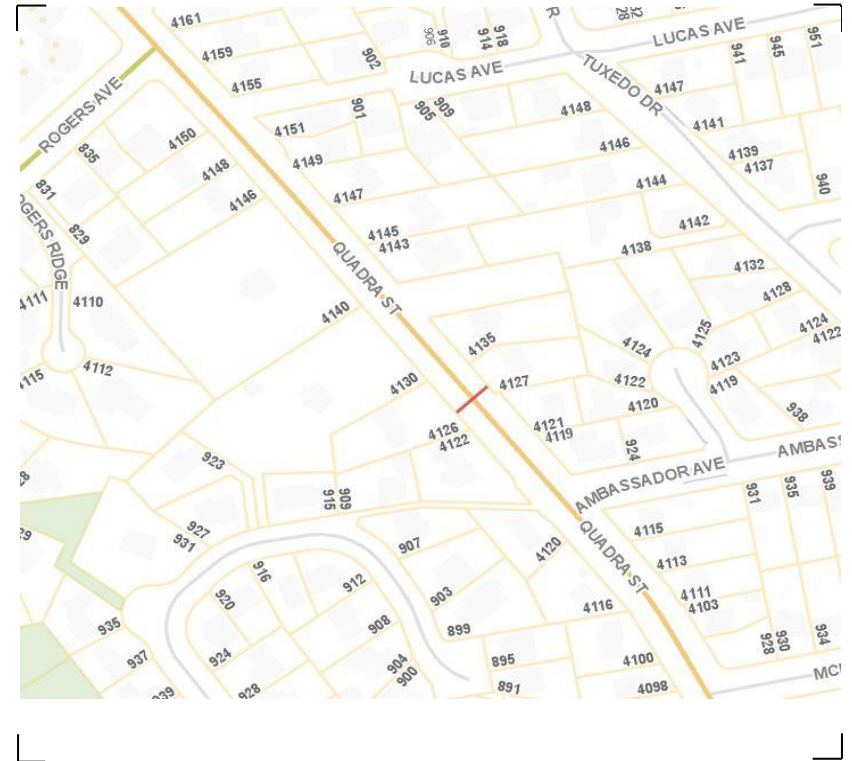
Direction: **North-South**

Dates: **October 21, 2019 To October 25, 2019**

*Filtered data*

AVG. SPEED	<b>34</b> mph	<b>55</b> km/h
50 % SPEED	<b>35</b> mph	<b>56</b> km/h
85 % SPEED	<b>39</b> mph	<b>63</b> km/h
95 % SPEED	<b>42</b> mph	<b>68</b> km/h

Location Map



**Quadra St between Lily Ave and Nicholson St**

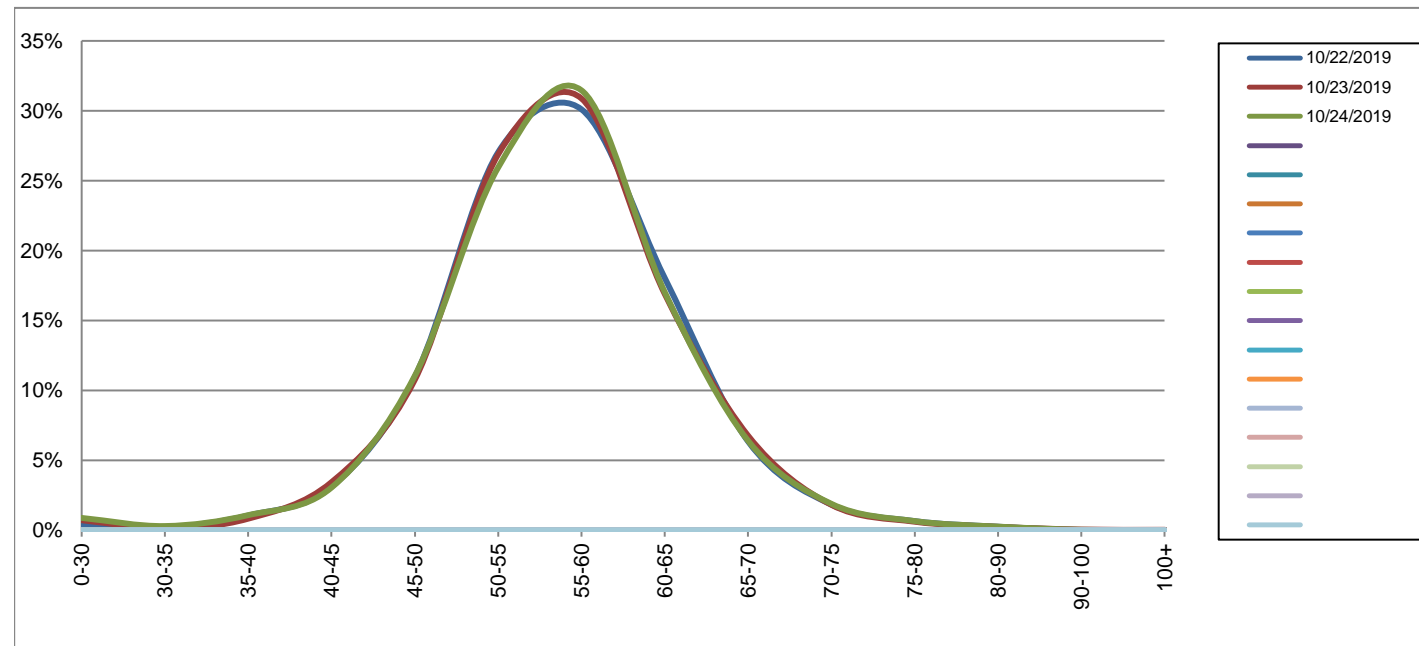
Northbound

October 22, 2019 to October 24, 2019

Daily Speed Bin Percentages															Daily Speed Bin Volumes														Total	Avg.
Bin #	1	2	3	4	5	6	7	8	9	10	11	12	13	14	1	2	3	4	5	6	7	8	9	10	11	12	13	14	Volume	Speed
Bin Speeds	0-30	30-35	35-40	40-45	45-50	50-55	55-60	60-65	65-70	70-75	75-80	80-90	90-100	100+	0-30	30-35	35-40	40-45	45-50	50-55	55-60	60-65	65-70	70-75	75-80	80-90	90-100	100+		
10/22/2019	0.4%	0.2%	1.1%	3.1%	11.0%	27.0%	30.1%	18.0%	6.3%	1.8%	0.7%	0.3%	0.0%	0.0%	41	20	105	310	1095	2699	3006	1801	634	183	65	25	1	1	9986	56
10/23/2019	0.7%	0.1%	0.8%	3.4%	10.8%	26.9%	30.9%	16.9%	6.8%	1.8%	0.6%	0.2%	0.0%	0.0%	72	12	83	346	1084	2708	3111	1702	681	183	61	24	5	3	10075	56
10/24/2019	0.9%	0.3%	1.1%	3.1%	11.0%	25.9%	31.5%	17.0%	6.4%	1.9%	0.7%	0.3%	0.0%	0.0%	89	30	109	309	1118	2626	3185	1723	648	191	66	26	3	1	10124	56
<b>Total</b>	<b>0.7%</b>	<b>0.2%</b>	<b>1.0%</b>	<b>3.2%</b>	<b>10.9%</b>	<b>26.6%</b>	<b>30.8%</b>	<b>17.3%</b>	<b>6.5%</b>	<b>1.8%</b>	<b>0.6%</b>	<b>0.2%</b>	<b>0.0%</b>	<b>0.0%</b>	<b>202</b>	<b>62</b>	<b>297</b>	<b>965</b>	<b>3297</b>	<b>8033</b>	<b>9302</b>	<b>5226</b>	<b>1963</b>	<b>557</b>	<b>192</b>	<b>75</b>	<b>9</b>	<b>5</b>	<b>30185</b>	<b>56</b>

**Speed Data Summary**

Bin #	1	2	3	4	5	6	7	8	9	10	11	12	13	14	Total
Bin Speeds	0-30	30-35	35-40	40-45	45-50	50-55	55-60	60-65	65-70	70-75	75-80	80-90	90-100	100+	
Survey Total	202	62	297	965	3297	8033	9302	5226	1963	557	192	75	9	5	30185
% Total	0.7%	0.2%	1.0%	3.2%	10.9%	26.6%	30.8%	17.3%	6.5%	1.8%	0.6%	0.2%	0.0%	0.0%	100%
Accumulated %	0.7%	0.9%	1.9%	5.1%	16.0%	42.6%	73.4%	90.7%	97.2%	99.1%	99.7%	100.0%	100.0%	100%	
Inverse Accum. %	99.3%	99.1%	98.1%	94.9%	84.0%	57.4%	26.6%	9.3%	2.8%	0.9%	0.3%	0.0%	0.0%	0.0%	
Average Speed	56 KM/H														



Site notes:

**Quadra St between Lily Ave and Nicholson St**

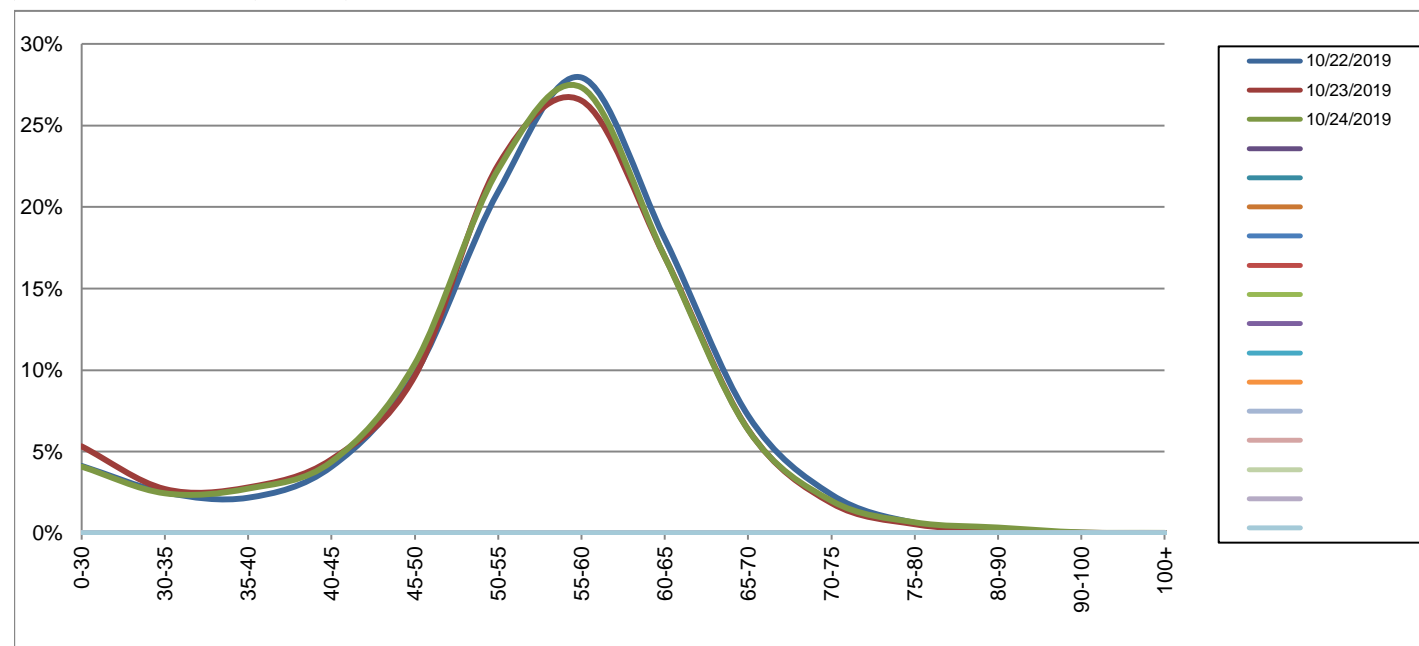
Southbound

October 22, 2019 to October 24, 2019

Daily Speed Bin Percentages															Daily Speed Bin Volumes														Total	Avg.
Bin #	1	2	3	4	5	6	7	8	9	10	11	12	13	14	1	2	3	4	5	6	7	8	9	10	11	12	13	14	Total	Avg.
Bin Speeds	0-30	30-35	35-40	40-45	45-50	50-55	55-60	60-65	65-70	70-75	75-80	80-90	90-100	100+	0-30	30-35	35-40	40-45	45-50	50-55	55-60	60-65	65-70	70-75	75-80	80-90	90-100	100+	Volume	Speed
10/22/2019	4.1%	2.5%	2.2%	4.1%	9.7%	20.9%	27.9%	18.0%	7.2%	2.4%	0.6%	0.2%	0.0%	0.0%	404	245	213	399	952	2048	2734	1766	706	232	62	22	2	1	9786	54
10/23/2019	5.3%	2.7%	2.8%	4.5%	9.6%	22.6%	26.5%	16.9%	6.4%	1.8%	0.5%	0.2%	0.0%	0.0%	533	271	281	453	964	2258	2653	1694	636	185	55	17	3	0	10003	53
10/24/2019	4.1%	2.4%	2.7%	4.4%	10.4%	22.3%	27.3%	16.9%	6.3%	2.0%	0.7%	0.3%	0.0%	0.0%	411	246	275	441	1045	2243	2750	1704	638	200	67	35	5	2	10062	54
<b>Total</b>	<b>4.5%</b>	<b>2.6%</b>	<b>2.6%</b>	<b>4.3%</b>	<b>9.9%</b>	<b>21.9%</b>	<b>27.3%</b>	<b>17.3%</b>	<b>6.6%</b>	<b>2.1%</b>	<b>0.6%</b>	<b>0.2%</b>	<b>0.0%</b>	<b>0.0%</b>	<b>1348</b>	<b>762</b>	<b>769</b>	<b>1293</b>	<b>2961</b>	<b>6549</b>	<b>8137</b>	<b>5164</b>	<b>1980</b>	<b>617</b>	<b>184</b>	<b>74</b>	<b>10</b>	<b>3</b>	<b>29851</b>	<b>54</b>

**Speed Data Summary**

Bin #	1	2	3	4	5	6	7	8	9	10	11	12	13	14	Total
Bin Speeds	0-30	30-35	35-40	40-45	45-50	50-55	55-60	60-65	65-70	70-75	75-80	80-90	90-100	100+	Total
Survey Total	1348	762	769	1293	2961	6549	8137	5164	1980	617	184	74	10	3	29851
% Total	4.5%	2.6%	2.6%	4.3%	9.9%	21.9%	27.3%	17.3%	6.6%	2.1%	0.6%	0.2%	0.0%	0.0%	100%
Accumulated %	4.5%	7.1%	9.6%	14.0%	23.9%	45.8%	73.1%	90.4%	97.0%	99.1%	99.7%	100.0%	100.0%	100%	
Inverse Accum. %	95.5%	92.9%	90.4%	86.0%	76.1%	54.2%	26.9%	9.6%	3.0%	0.9%	0.3%	0.0%	0.0%	0.0%	
Average Speed	54 KM/H														



Site notes:

**Quadra St between Lily Ave and Nicholson St**

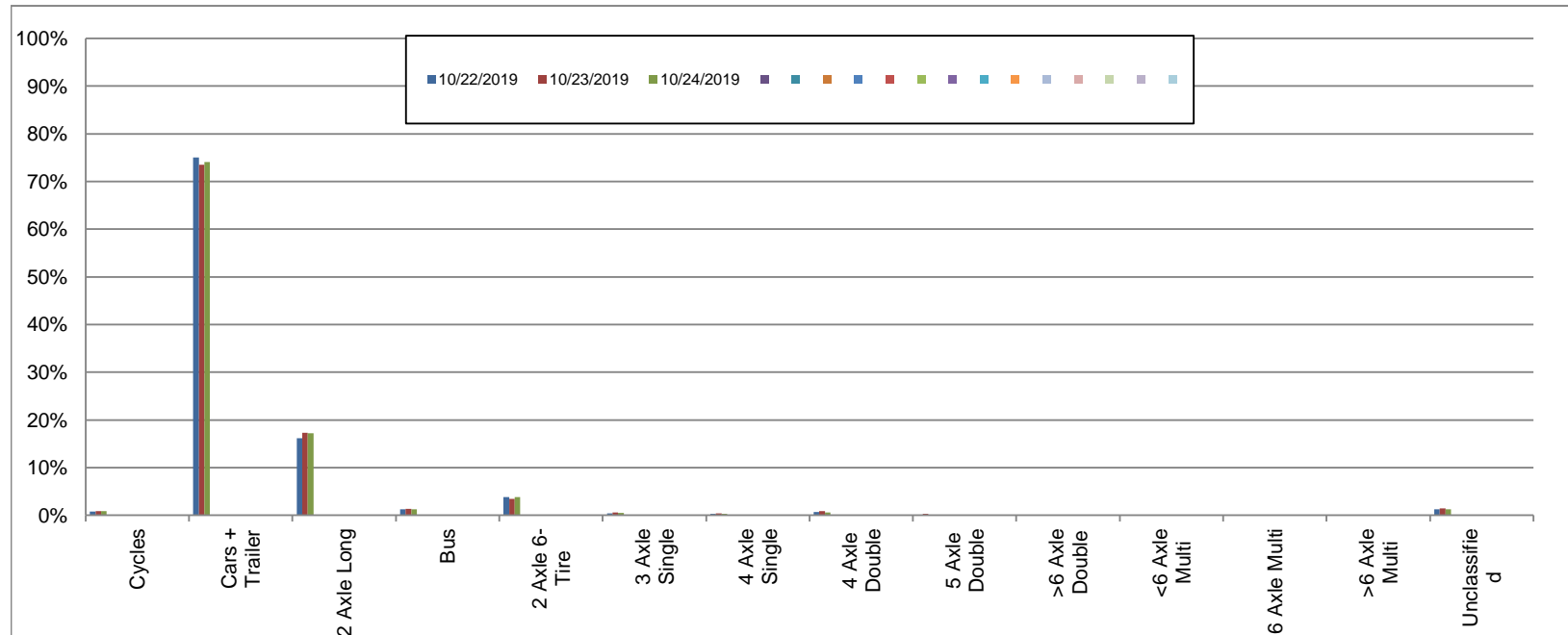
Northbound

October 22, 2019 to October 24, 2019

Daily Class Bin Percentages															Daily Class Bin Volumes														
Bin #	1	2	3	4	5	6	7	8	9	10	11	12	13	14	1	2	3	4	5	6	7	8	9	10	11	12	13	14	Total Volume
Bin Class	Cycles	Cars + Trailer	2 Axle Long	Bus	2 Axle 6-Tire	3 Axle Single	4 Axle Single	4 Axle Double	5 Axle Double	>6 Axle Double	<6 Axle Multi	6 Axle Multi	>6 Axle Multi	Unclassified	Cycles	Cars + Trailer	2 Axle Long	Bus	2 Axle 6-Tire	3 Axle Single	4 Axle Single	4 Axle Double	5 Axle Double	>6 Axle Double	<6 Axle Multi	6 Axle Multi	>6 Axle Multi	Unclassified	
10/22/2019	0.8%	75.0%	16.2%	1.3%	3.8%	0.4%	0.3%	0.7%	0.1%	0.1%	0.0%	0.0%	0.0%	1.3%	80	7489	1614	129	384	41	31	66	12	6	3	0	2	129	9986
10/23/2019	0.9%	73.5%	17.3%	1.3%	3.5%	0.6%	0.4%	0.8%	0.3%	0.0%	0.0%	0.0%	0.0%	1.4%	87	7402	1746	136	349	58	38	83	26	4	1	1	2	142	10075
10/24/2019	0.8%	74.1%	17.2%	1.2%	3.8%	0.5%	0.3%	0.6%	0.1%	0.0%	0.0%	0.0%	0.0%	1.2%	85	7501	1740	122	388	50	32	64	10	2	2	0	4	124	10124
<b>Total</b>	<b>0.8%</b>	<b>74.2%</b>	<b>16.9%</b>	<b>1.3%</b>	<b>3.7%</b>	<b>0.5%</b>	<b>0.3%</b>	<b>0.7%</b>	<b>0.2%</b>	<b>0.0%</b>	<b>0.0%</b>	<b>0.0%</b>	<b>0.0%</b>	<b>1.3%</b>	<b>252</b>	<b>22392</b>	<b>5100</b>	<b>387</b>	<b>1121</b>	<b>149</b>	<b>101</b>	<b>213</b>	<b>48</b>	<b>12</b>	<b>6</b>	<b>1</b>	<b>8</b>	<b>395</b>	<b>30185</b>

**Class Data Summary**

Bin #	1	2	3	4	5	6	7	8	9	10	11	12	13	14	Total Volume
Bin Class	Cycles	Cars + Trailer	2 Axle Long	Bus	2 Axle 6-Tire	3 Axle Single	4 Axle Single	4 Axle Double	5 Axle Double	>6 Axle Double	<6 Axle Multi	6 Axle Multi	>6 Axle Multi	Unclassified	Total Volume
<b>Survey Total</b>	252	22392	5100	387	1121	149	101	213	48	12	6	1	8	395	30185
<b>% Total</b>	0.8%	74.2%	16.9%	1.3%	3.7%	0.5%	0.3%	0.7%	0.2%	0.0%	0.0%	0.0%	0.0%	1.3%	100%
<b>Accumulated %</b>	0.8%	75.0%	91.9%	93.2%	96.9%	97.4%	97.7%	98.4%	98.6%	98.6%	98.7%	98.7%	98.7%	100.0%	
<b>Inv. Accum. %</b>	99.2%	25.0%	8.1%	6.8%	3.1%	2.6%	2.3%	1.6%	1.4%	1.4%	1.3%	1.3%	1.3%	0.0%	



**Classification Descriptions**

Bin #	Bin Description
1	Motorcycles
2	Passenger cars, including those with recreational trailers
3	2-axle pick-ups, vans, and RVs, including those with recreational trailers
4	Buses
5	2-axle, 6-tire single units
6	3-axle single units
7	4-axle single units
8	3-axle or 4-axle double unit
9	5-axle double unit
10	6-, 7-, or 8-axle double unit
11	5-axle multiple unit
12	6-axle multiple unit
13	7-or-more-axle multiple unit
14	Vehicles that could not be classified

Site notes:



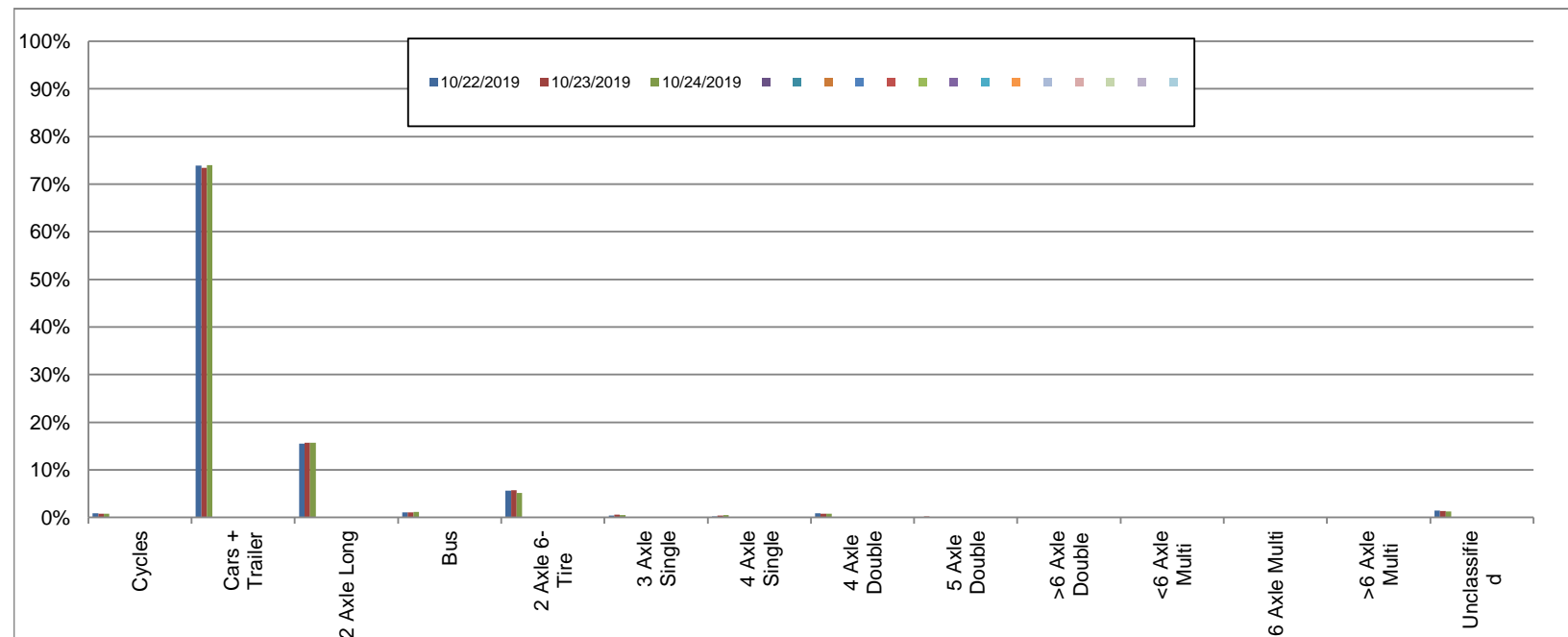
**Quadra St between Lily Ave and Nicholson St**

Southbound  
October 22, 2019 to October 24, 2019

Daily Class Bin Percentages															Daily Class Bin Volumes														
Bin #	1	2	3	4	5	6	7	8	9	10	11	12	13	14	1	2	3	4	5	6	7	8	9	10	11	12	13	14	Total Volume
Bin Class	Cycles	Cars + Trailer	2 Axle Long	Bus	2 Axle 6-Tire	3 Axle Single	4 Axle Single	4 Axle Double	5 Axle Double	>6 Axle Double	<6 Axle Multi	6 Axle Multi	>6 Axle Multi	Unclassified	Cycles	Cars + Trailer	2 Axle Long	Bus	2 Axle 6-Tire	3 Axle Single	4 Axle Single	4 Axle Double	5 Axle Double	>6 Axle Double	<6 Axle Multi	6 Axle Multi	>6 Axle Multi	Unclassified	
10/22/2019	0.8%	73.9%	15.5%	1.1%	5.7%	0.4%	0.2%	0.9%	0.1%	0.1%	0.0%	0.0%	0.0%	1.4%	82	7234	1513	106	554	37	23	84	8	5	1	1	1	137	9786
10/23/2019	0.8%	73.4%	15.7%	1.0%	5.7%	0.6%	0.3%	0.8%	0.2%	0.0%	0.0%	0.0%	0.0%	1.3%	80	7340	1573	104	574	56	35	79	22	4	1	0	2	133	10003
10/24/2019	0.8%	74.0%	15.7%	1.1%	5.2%	0.5%	0.5%	0.8%	0.1%	0.0%	0.0%	0.0%	0.0%	1.3%	82	7448	1575	115	522	46	51	81	11	1	1	1	0	128	10062
<b>Total</b>	<b>0.8%</b>	<b>73.8%</b>	<b>15.6%</b>	<b>1.1%</b>	<b>5.5%</b>	<b>0.5%</b>	<b>0.4%</b>	<b>0.8%</b>	<b>0.1%</b>	<b>0.0%</b>	<b>0.0%</b>	<b>0.0%</b>	<b>0.0%</b>	<b>1.3%</b>	<b>244</b>	<b>22022</b>	<b>4661</b>	<b>325</b>	<b>1650</b>	<b>139</b>	<b>109</b>	<b>244</b>	<b>41</b>	<b>10</b>	<b>3</b>	<b>2</b>	<b>3</b>	<b>398</b>	<b>29851</b>

**Class Data Summary**

Bin #	1	2	3	4	5	6	7	8	9	10	11	12	13	14	Total Volume
Bin Class	Cycles	Cars + Trailer	2 Axle Long	Bus	2 Axle 6-Tire	3 Axle Single	4 Axle Single	4 Axle Double	5 Axle Double	>6 Axle Double	<6 Axle Multi	6 Axle Multi	>6 Axle Multi	Unclassified	Total Volume
<b>Survey Total</b>	244	22022	4661	325	1650	139	109	244	41	10	3	2	3	398	29851
<b>% Total</b>	0.8%	73.8%	15.6%	1.1%	5.5%	0.5%	0.4%	0.8%	0.1%	0.0%	0.0%	0.0%	0.0%	1.3%	100%
<b>Accumulated %</b>	0.8%	74.6%	90.2%	91.3%	96.8%	97.3%	97.7%	98.5%	98.6%	98.6%	98.6%	98.7%	98.7%	100.0%	
<b>Inv. Accum. %</b>	99.2%	25.4%	9.8%	8.7%	3.2%	2.7%	2.3%	1.5%	1.4%	1.4%	1.4%	1.3%	1.3%	0.0%	



**Classification Descriptions**

Bin #	Bin Description
1	Motorcycles
2	Passenger cars, including those with recreational trailers
3	2-axle pick-ups, vans, and RVs, including those with recreational trailers
4	Buses
5	2-axle, 6-tire single units
6	3-axle single units
7	4-axle single units
8	3-axle or 4-axle double unit
9	5-axle double unit
10	6-, 7-, or 8-axle double unit
11	5-axle multiple unit
12	6-axle multiple unit
13	7-or-more-axle multiple unit
14	Vehicles that could not be classified

Site notes: